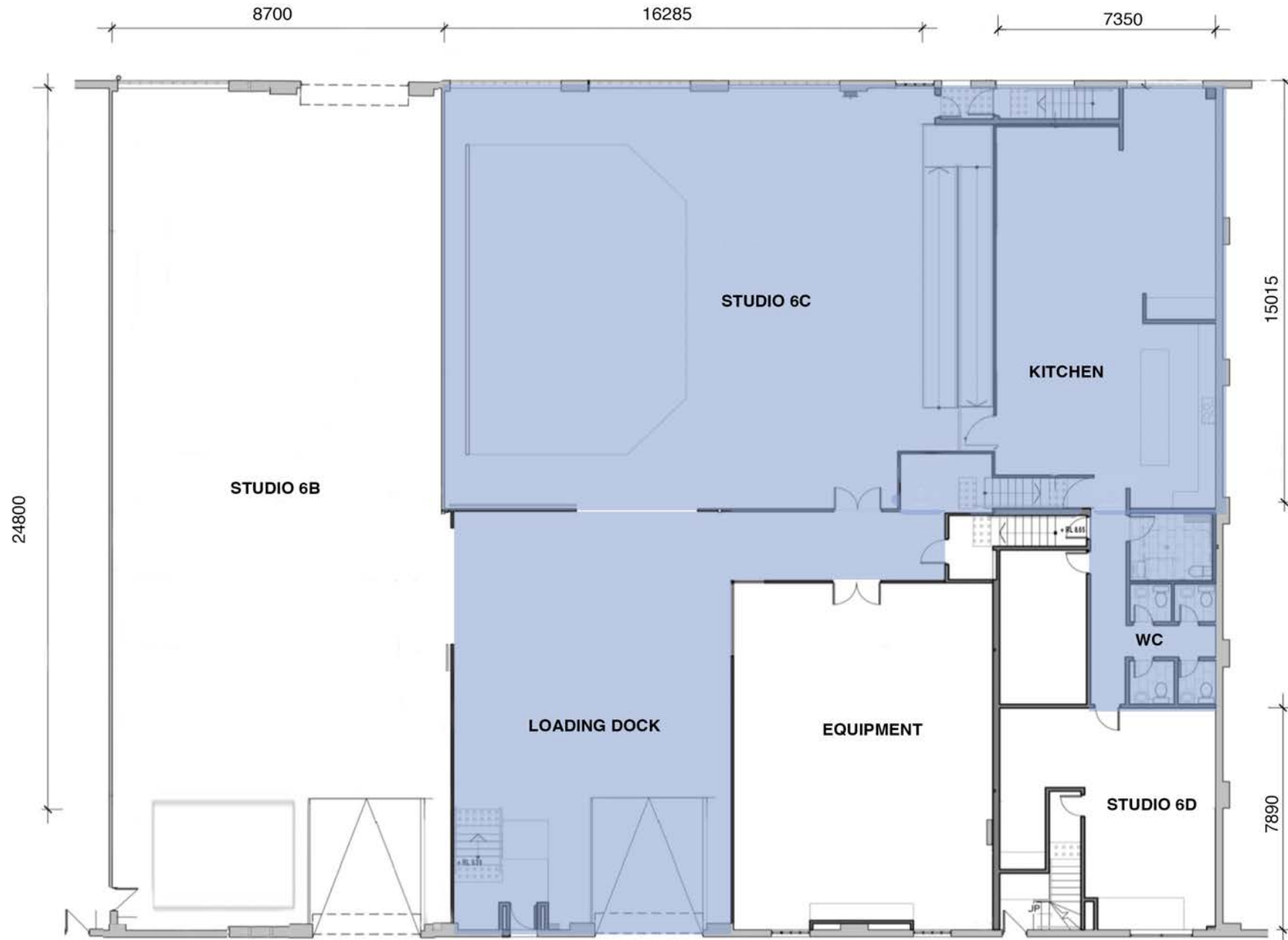


STUDIO 6C



STUDIO 6C



STUDIO 6C

SPECIFICATIONS

- 240 m² Open Floor Daylight Studio
- 100 m² Loading Dock / Foyer
- Client Seating Area
- Natural Light, East-Facing Windows
- Blackout Curtains
- Polished Concrete Floors
- Freshly Painted White Cyclorama:
11d x 8w x 4h m
- 400A / 3 Phase Power
- Height to Truss: 4.3m
- Height to Ceiling: 6m
- Street-Level Vehicle Access: 3.8m x 3.8m
- Wheelchair Access

STANDARD AMENITIES

- Complimentary Wifi
- Polyboards, Polyfeet and Shot Bags
- Power Boards and Extension Leads
- Sound Stereo / iPhone Inputs
- Wheelchair Access
- Coffee Machine & Tea-making Facilities
- Powerful Reverse Cycle Air Conditioning
- Stylist Kit (Iron, Ironing Board, Steamer, Racks)
- 2 x Large Rolling Tables
- 1 x Digital Operator Desk
- 2 x Hair & Makeup Stations
- 2 x Changing Rooms
- 5 x Toilets, 1 x Shower
- 1 x Dining Table with 8 Stools
- Full Domestic Kitchen
- Onsite Parking for 5 Cars



