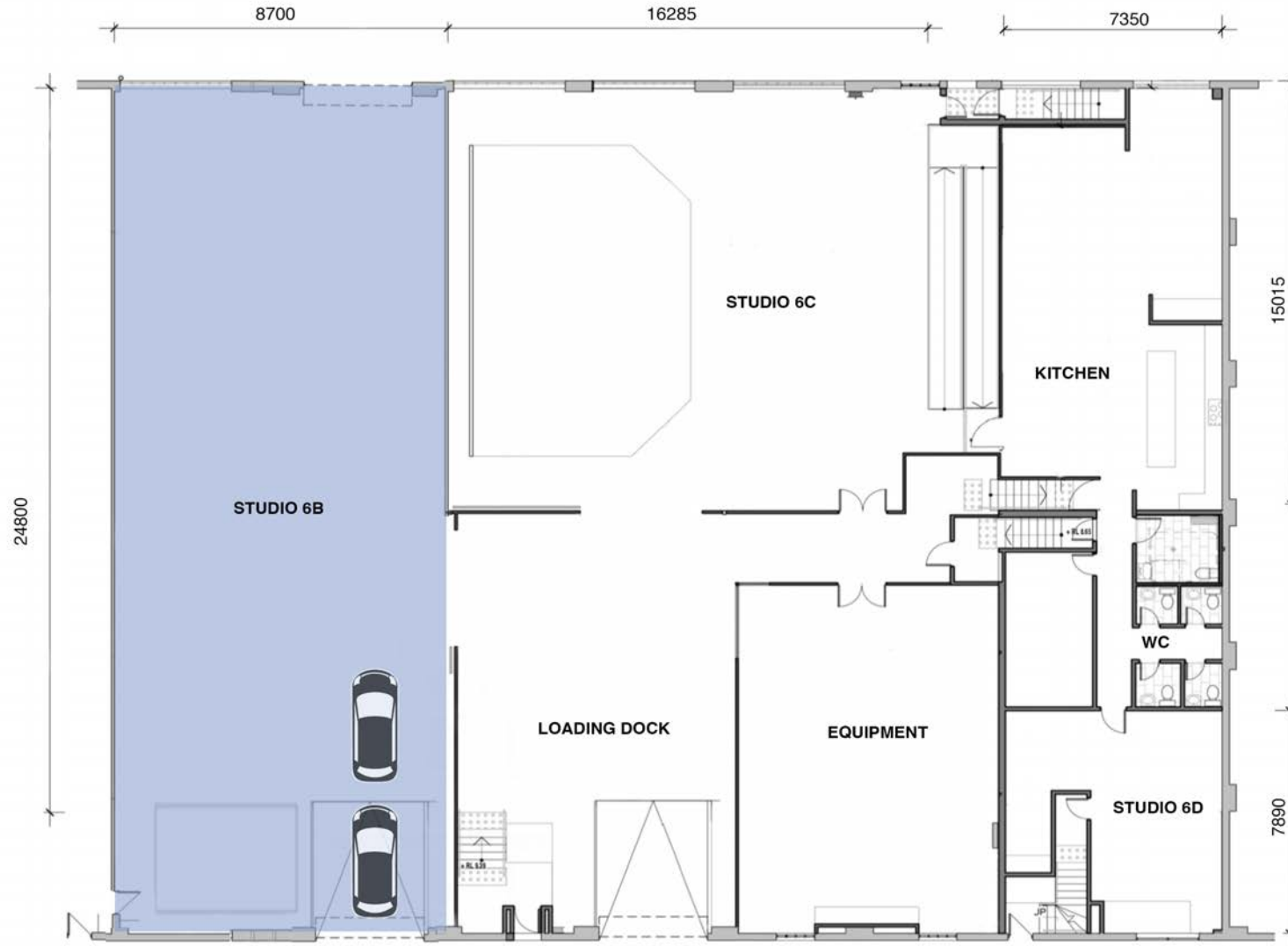


STUDIO 6B



STUDIO 6B



STUDIO 6B

SPECIFICATIONS

- 215 m² daylight studio
- Open floor, column-less
- Floor dimensions: 8.7 m x 24.8 m
- East facing windows: 2.3 m x 3.5 m
- Polished concrete floor
- Height to truss: 4.3 m;
- Height to ceiling: 6 m
- Street level vehicle access: 3.8 m x 3.8 m
- 400A/3 phase power

ADDITIONAL SERVICES

- Wall and Floor Flat Hire
- Grip Truck Parking
- In-house Barista
- Early Starts
- In-house Lighting, Camera and Grip Hire

STANDARD AMENITIES

- 1 x hair & makeup station
- 1 x digital operator desk
- 5 x bathrooms, 1 x shower
- 1 x dining table with 8 stools
- Kitchenware and tea-making facilities
- Complementary wifi
- Polyboards, polyfeet and shot bags
- Sound stereo / iphone inputs
- Powerboard & extension cables
- Stylist kit (Steamer, iron, ironing board, racks)
- Onsite parking for 2 cars